



# TARMAC INTERNATIONAL AGRICULTURE TYRES



## Tractor Front



# TARMAC INTERNATIONAL AGRICULTURE TYRES



## Pattern Features:

1. Ideal for use on tractor front for field operations and regular transport.
2. Sturdy shoulder bars offer excellent sidewall protection.
3. Winder tread area guarantees longer life.

## TR-02

SR. NO.	SIZE	PLY RATING	INFLATED $\pm 2\%$		LOAD CAPACITY in kg	INFLATED PRESSURE in KPA
			SECTION WIDTH in mm	OVERALL DIAMETER In mm		
1	6.00-16	8	170	745	670	430
2	6.50-16	8	175	760	750	430
3	7.50-16	8	205	808	875	380
4	7.50-18	8	203	869	950	380
5						



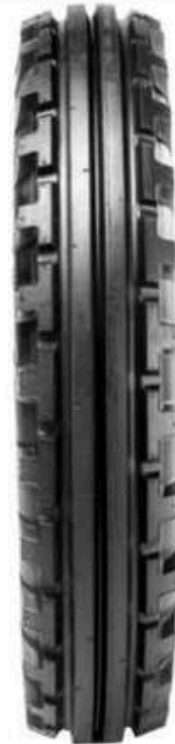


# TARMAC INTERNATIONAL AGRICULTURE TYRES

## TR 201

### Pattern Features:

1. Strongly built nylon construction ensures long life.
2. Improved pattern design ensures high load capacity and low rolling resistance which ensures good grip on surface.
3. Improved compounding ensures maximum life.



SR. NO.	SIZE	PLY RATING	INFLATED $\pm 2\%$		LOAD CAPACITY in kg	INFLATED PRESSURE in KPA
			SECTION WIDTH in mm	OVERALL DIAMETER In mm		
1	5.00-15	4	140	655	475	480
2	4.00-16	4	112	640	325	350
3	4.50-16	6	122	665	365	330
4	5.00-16	6	140	680	400	420
5	5.50-16	6	150	710	710	370
6	6.00-16	8	165	745	670	460
7	6.50-16	8	175	760	750	430
8	7.50-16	8	205	808	875	380
9	7.50-18	8	204	867	950	380
10	6.00-19	8	165	814	925	420
11	6.50-20	8	173	864	850	460
12	7.50-20	8	203	920	1030	350

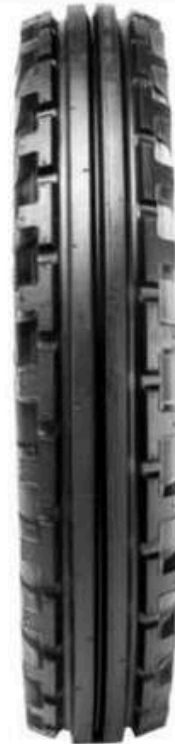


# TARMAC INTERNATIONAL AGRICULTURE TYRES

## TR 201

### Pattern Features:

1. Strongly built nylon construction ensures long life.
2. Improved pattern design ensures high load capacity and low rolling resistance which ensures good grip on surface.
3. Improved compounding ensures maximum life.



SR. NO.	SIZE	PLY RATING	INFLATED ±2%		LOAD CAPACITY in kg	INFLATED PRESSURE in KPA
			SECTION WIDTH in mm	OVERALL DIAMETER In mm		
1	5.00-15	4	140	655	475	480
2	4.00-16	4	112	640	325	350
3	4.50-16	6	122	665	365	330
4	5.00-16	6	140	680	400	420
5	5.50-16	6	150	710	710	370
6	6.00-16	8	165	745	670	460
7	6.50-16	8	175	760	750	430
8	7.50-16	8	205	808	875	380
9	7.50-18	8	204	867	950	380
10	6.00-19	8	165	814	925	420
11	6.50-20	8	173	864	850	460
12	7.50-20	8	203	920	1030	350



# TARMAC INTERNATIONAL AGRICULTURE TYRES

## F2

### Pattern Features:

1. Strongly built nylon construction ensures long life.
2. Improved pattern design ensures high load capacity and low rolling resistance which ensures good grip on surface.
3. Improved compounding ensures maximum life.



SR. NO.	SIZE	PLY RATING	INFLATED $\pm 2\%$		LOAD CAPACITY in kg	INFLATED PRESSURE in KPA
			SECTION WIDTH in mm	OVERALL DIAMETER In mm		
1	3.50-6	4	99	343	165	270
2	3.50-8	4	101	371	185	270
3	4.00-8	4	112	430	225	280
4	4.00-12	4	112	530	300	280
5	4.00-15	4	112	610	290	280
6	5.00-15	4	140	655	475	480
7	4.00-16	4	112	640	325	350
8	4.50-16	6	122	665	365	330
9	5.00-16	6	140	680	400	420
10	5.50-16	6	150	710	710	370
11	6.00-16	8	165	745	670	460
12	6.50-16	8	175	760	750	430
13	7.50-16	8	205	808	875	380
14	9.00-16	10	234	854	1250	390
15	10.00-16	10	275	900	1360	290
16	11.00-16	12	320	974	1600	250
17	7.50-18	8	204	867	950	380
18	4.00-19	6	112	712	355	340
19	6.00-19	8	165	814	925	420
20	6.50-20	8	173	864	850	460
21	7.50-20	8	203	920	1030	350





# TARMAC INTERNATIONAL AGRICULTURE TYRES

- ▶ Our Agriculture Tyres Are Empowering Farmers
- ▶ Avoiding Unnecessary Shutdown



**TARMAC AGRICULTURE TYRES**



# TARMAC INTERNATIONAL AGRICULTURE TYRES

## TRACTOR REAR



**TR-29**



**TR-42**

SR. NO.	SIZE	PLY RATING	INFLATED $\pm 2\%$		LOAD CAPACITY in kg	INFLATED PRESSURE in KPA
			SECTION WIDTH in mm	OVERALL DIAMETER in mm		
1	6.00-12	6	164	633	270	200
2	11.2-24	8	284	1105	1250	240
3	12.4-28	6	315	1260	1285	170
4	13.6-28	8	345	1310	1650	200
5	8.3-24	8	211	955	925	310
6	11.2-38	6	284	1445	1285	180
7	15.5-38	8	395	1585	2060	180
8	9.5-24	8	232	1056	1120	280
9	12.4-24	6	315	1160	1215	170
10	14.9-28	8	378	1365	1900	180
11	16.9-34	10	429	1585	2650	200
12	12.4-24	6	315	1160	1215	170
13	16.9-26	10	430	1380	2300	200
14	12.4-28	6	315	1260	1285	170
15	18.4-28	12	467	1501	3075	220
16	13.6-38	8	345	1565	1950	200
17	18.4-38	8	467	1750	2725	140
18	14.9-24	6	368	1265	1550	140
19	18.4-26	12	467	1450	3000	230
20	14.9-28	8	378	1365	1900	180
21	14.9-30	6	378	1415	1700	140
22	8.3-32	8	211	1195	1090	320





# TARMAC INTERNATIONAL AGRICULTURE TYRES

## Pattern Features:

1. Specially designed for traction, these tyres with deep treads provides excellent traction for general farming.
2. Self cleaning deep lugs are especially designed to provide high traction and long life under hardest working condition, including On-Road service.

SR. NO.	SIZE	PLY RATING	INFLATED $\pm 2\%$		LOAD CAPACITY in kg	INFLATED PRESSURE in KPA
			SECTION WIDTH in mm	OVERALL DIAMETER In mm		
23	18-4.34	10	467	1650	3000	180
24	6.00-16	8	165	735	670	450
25	13.6-26	6	340	1270	1400	160
26	11.2-28	6	284	1205	1120	180
27	16.9-28	12	429	1435	2725	240
28	16.9-30	8	429	1485	2300	170
29	12.4-32	6	315	1360	1360	170
30	16.9-38	8	429	1685	2575	170
31	7.50-16	10	205	805	1030	475
32	18.4-26	10	461	1450	2650	180
33	16.9-30	8	429	1485	2300	170
34	23.1-26	14	587	1605	4000	200
35	18.4-30	12	467	1550	3250	230
36	18.4-34	10	467	1650	3000	180
37	16.9-38	8	429	1685	2575	170
38	18.4-38	8	467	1750	2725	140
39	14.9-24	8	378	1265	1800	180
40	13.6-28	8	345	1310	1650	200
41	14.9-26	10	365	1330	1850	220
42	15.5/80-24	12	394	1264	4125	300
43	11.2-28	6	284	1205	1120	180
44	12.4-28	6	315	1260	1285	170
45	13.6-28	8	345	1310	1650	200
46	18.4-30	12	467	1550	3250	230
47	23.1-30	8	600	1700	3000	110
48	23.1-30	12	600	1700	3875	170
49	8.00-18	4	190	845	520	160
50	20.8-34	12	460	1665	3075	215





# TARMAC INTERNATIONAL AGRICULTURE TYRES



## AGRICULTURE TYRES

### Pattern Features:

1. Minimal solid compaction.
2. Long Service

SR. NO.	SIZE	PLY RATING	INFLATED $\pm 2\%$		LOAD CAPACITY in kg	INFLATED PRESSURE in KPA
			SECTION WIDTH in mm	OVERALL DIAMETER In mm		
1.	11.2-24	6	284	1105	825	130
2.	12.4-24	6	315	1170	1100	140
3.	14.9-24	6,8	378	1265	1620	160
4.	11.2-38	6,8	284	1463	1555	210



# TARMAC INTERNATIONAL AGRICULTURE TYRES



**AGRICULTURE IMPLEMENT TYRES**





# TARMAC INTERNATIONAL AGRICULTURE TYRES

## Pattern Features:

1. Heavier load capacity ensures the tyre to operate under severe working conditions by providing excellent performance.
2. It is suitable for agriculture implement and trailer use, both On-Road & Off-Road.



## TR-01

### AGRICULTURE MULTI RIB

SR. NO.	SIZE	PLY RATING	INFLATED $\pm 2\%$		LOAD CAPACITY in kg	INFLATED PRESSURE in KPA
			SECTION WIDTH in mm	OVERALL DIAMETER in mm		
1	10.00-15	18	275	918	4120	860
2	16.5L-16.1	8	419	1024	2000	200
3	9.5L-14	8	240	735	1090	300
4	11L-15	10	270	770	1320	300
5	12.5L-16	12	310	845	1800	360
6	10.5/65-16	14	274	755	1900	530
7	21.5-16	14	550	1130	3550	250
8	9.5L-15	12	241	765	1300	390
9	11L-16	10	270	795	1360	300
10	7.50-16	8	205	785	1060	330
11	12.5L-15	12	310	845	1800	360
12	11L-14	8	269	752	1216	248
13	13.0/65-18	14	336	890	2575	430



# TARMAC INTERNATIONAL AGRICULTURE TYRES

## Pattern Features:

1. Multirib and low section tyre designed for high flotation.
2. Optimised rib width and profiled shoulder for on and off the road service.
3. Extra reinforced plies for higher load capacity of farm implement.
4. Cuts and cracks resistant tread compound for extra service life.

SR. NO.	SIZE	PLY RATING	INFLATED $\pm 2\%$		LOAD CAPACITY in kg	INFLATED PRESSURE in KPA
			SECTION WIDTH in mm	OVERALL DIAMETER In mm		
1	14.0/65-16	10	353	870	2120	280
2	14.0/65-16	14	353	870	2575	400
3	15.0/55-17	10	391	850	2800	280

## Pattern Features:

1. Multirib and low section tyre designed for high flotation.
2. Optimised rib width and profiled shoulder for on and off the road service.
3. Extra reinforced plies for higher load capacity of farm implement.
4. Cuts and cracks resistant tread compound for extra service life.

SR. NO.	SIZE	PLY RATING	INFLATED $\pm 2\%$		LOAD CAPACITY in kg	INFLATED PRESSURE in KPA
			SECTION WIDTH in mm	OVERALL DIAMETER In mm		
1	19.0/45-17	14	491	866	2800	390
2	500/50-17	14	500	945	4500	440





# TARMAC INTERNATIONAL AGRICULTURE TYRES

## Pattern Features:

1. Multirid and low section tyre designed for high flotation.
2. Optimised rib width and profiled shoulder for on and off the road service.
3. Extra reinforced plies for higher load capacity of farm implement.
4. Cuts and cracks resistant tread compound for extra service life.



**TR-03**

SR. NO.	SIZE	PLY RATING	INFLATED $\pm 2\%$		LOAD CAPACITY in kg	INFLATED PRESSURE in KPA
			SECTION WIDTH in mm	OVERALL DIAMETER In mm		
1	10.0/80-12	8	264	710	1250	310
2	11.5/80-15.3	14	290	845	2430	475
3	10.5/65-16	14	274	755	1900	530
4	12.5/80-18	12	308	965	2650	370
5	10.0/75-15.3	12	264	760	1700	470
6	12.5/80-15.3	14	307	889	2650	430
7	10.5/80-18	10	274	885	1950	370
8	13.0/65-18	14	336	890	2575	430
9	10.5-16	14	305	975	3075	710

## Pattern Features:

1. Multirid and low section tyre designed for high flotation.
2. Optimised rib width and profiled shoulder for on and off the road service.
3. Extra reinforced plies for higher load capacity of farm implement.
4. Cuts and cracks resistant tread compound for extra service life.

SR. NO.	SIZE	PLY RATING	INFLATED $\pm 2\%$		LOAD CAPACITY in kg	INFLATED PRESSURE in KPA
			SECTION WIDTH in mm	OVERALL DIAMETER In mm		
1	400/60-15.5	14	405	875	3650	520



# TARMAC INTERNATIONAL AGRICULTURE TYRES

## MILITARY TYRES

SR. NO.	SIZE	PLY RATING	INFLATED $\pm 2\%$		LOAD CAPACITY in kg	INFLATED PRESSURE in KPA
			SECTION WIDTH in mm	OVERALL DIAMETER In mm		
1	9.00-16	14	234	855	1950	620

### Pattern Features:

1. Longitudinal, evenly spaced ribs for required free rolling characteristics.
2. Suitably profiled shoulder region with lateral grooves to control slide slips.
3. Strong and heavy duty NYLON body plies for higher load carrying capacity.
4. Tread compound for longer service life during all weather conditions.



**MIL-01**

SR. NO.	SIZE	PLY RATING	INFLATED $\pm 2\%$		LOAD CAPACITY in kg	INFLATED PRESSURE in KPA
			SECTION WIDTH in mm	OVERALL DIAMETER In mm		
1	9.00-16	14	234	855	1950	620

### Pattern Features:

1. Longitudinal, evenly spaced ribs for required free rolling characteristics.
2. Suitably profiled shoulder region with lateral grooves to control slide slips.
3. Strong and heavy duty NYLON body plies for higher load carrying capacity.
4. Tread compound for longer service life during all weather conditions.



**MIL-02**

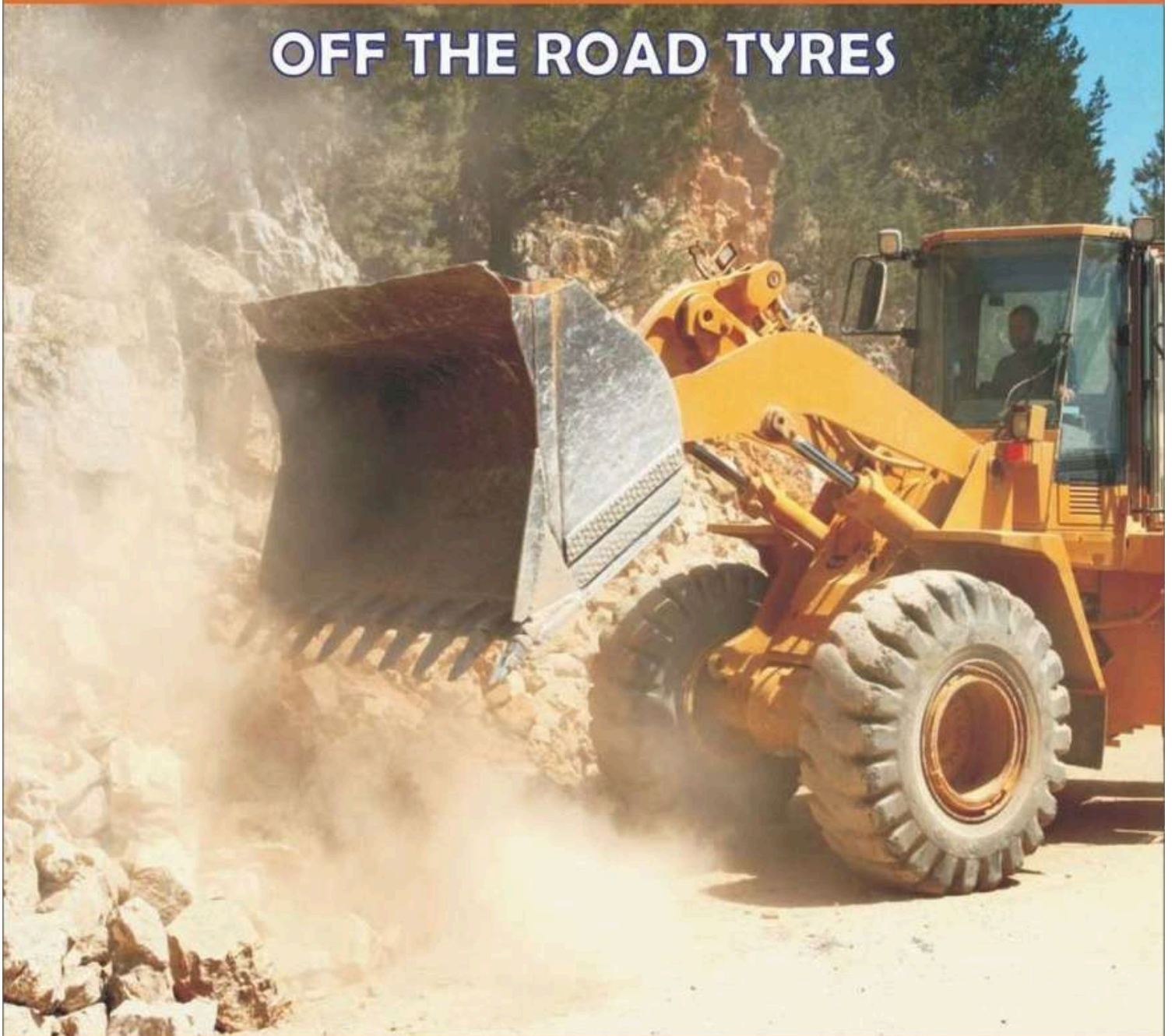
SR. NO.	SIZE	PLY RATING	INFLATED $\pm 2\%$		LOAD CAPACITY in kg	INFLATED PRESSURE in KPA
			SECTION WIDTH in mm	OVERALL DIAMETER In mm		
1	9.00-16	14	234	855	1950	620





**TARMAC INTERNATIONAL**

**OFF THE ROAD TYRES**



**Loader / Earthmover / Grader**



# TARMAC INTERNATIONAL

## OFF THE ROAD RANGE



Classic no-directional tread design formulated with cut resistance compound. Together with a robust duty nylon carcass makes it capable of withstanding cuts in all tough service conditions

### EM-01

Loader / Earthmover / Grader

17.5-25	E-3	12	14.00/1.5	26.0	1350	445	3850	225	TT/TL
	L-3	12	14.00/1.5	26.0	1350	445	6150	350	TT/TL
	E-3	16	14.00/1.5	26.0	1350	445	4250	300	TT/TL
	L-3	16	14.00/1.5	26.0	1350	445	7300	470	TT/TL
20.5-25	E-3	16	17.00/2.0	31.0	1495	520	5450	275	TT/TL
	L-3	16	17.00/2.0	31.0	1495	520	8250	350	TT/TL
	E-3	20	17.00/2.0	31.0	1495	520	6000	325	TT/TL
	L-3	20	17.00/2.0	31.0	1495	520	9500	450	TT/TL







# TARMAC INTERNATIONAL

## OFF THE ROAD RANGE

### SKS-03



Skid Steer

Size	T&A Code	Ply Rating	Standard Rim	Tread Depth (mm)	Overall Diameter (mm)	Section Width (mm)	Max. Load Capacity (kg)	Cold Inflation Pressure (kPa)	TU/TL
10-16.5	-	10	8.25	22.0	773	264	2135	520	TL
12-16.5	-	12	9.75	24.0	831	307	2865	550	TL
14-17.5	-	14	10.50	22.0	921	349	3875	550	TL

### SKS-04



Skid Steer

Size	T&A Code	Ply Rating	Standard Rim	Tread Depth (mm)	Overall Diameter (mm)	Section Width (mm)	Max. Load Capacity (kg)	Cold Inflation Pressure (kPa)	TU/TL
10-16.5	-	8	8.25	19.5	773	264	1880	410	TL
	-	10	8.25	19.5	773	264	2135	520	TL
12-16.5	-	10	9.75	22.0	831	307	2540	450	TL



# TARMAC INTERNATIONAL

## OFF THE ROAD RANGE

BH-03



# R-4

Backhoe

Size	TBA Code	Ply Rating	Standard Rim	Tread Depth (mm)	Overall Diameter (mm)	Section Width (mm)	Max. Load Capacity (kg)	Cold Inflation Pressure (kPa)	T/FL
17.5L-24	R-4	12	W15L	25.5	1241	434	2995	250	TL
19.5L-24	R-4	12	DW16A	27.0	1314	485	3450	230	TL
	R-4	14	DW16A	27.0	1314	485	3750	260	TL
21L-24	R-4	12	DW18A	27.5	1378	533	3875	220	TL





# TARMAC INTERNATIONAL

## OFF THE ROAD RANGE



### BH-01

#### Backhoe

Size	TMA Code	Ply Rating	Standard Rim	Tread Depth (mm)	Overall Diameter (mm)	Section Width (mm)	Max. Load Capacity (kg)	Cold Inflation Pressure (kPa)	TVL
14.9-24	R-4	12	W13	26	1241	378	2900	290	TL
18.4-24	R-4	12	W16L	29	1375	467	3875	250	TL
19.5L-24	R-4	12	DW16A	27	1314	485	3450	230	TL
	R-4	14	DW16A	27	1314	485	3750	260	TL
18.4-26	R-4	12	DW16	30	1425	467	4000	250	TL
16.9-28	R-4	12	W15L	31	1410	430	3550	260	TL
18.4-28	R-4	12	W16L	29	1476	467	3135	220	TL
16.9-30	R-4	12	W15L	29	1427	405	3878	300	TL



### BH-02

#### Backhoe

Size	TMA Code	Ply Rating	Standard Rim	Tread Depth (mm)	Overall Diameter (mm)	Section Width (mm)	Max. Load Capacity (kg)	Cold Inflation Pressure (kPa)	TVL
10.5/80-18	R-4	10	9	26	905	274	1935	370	TL
10.5/80-18	R-4	12	9	26	905	274	1350	370	TL
12.5/80-18	R-4	12	9	26	985	308	2625	370	TL
	R-4	14	9	26	985	308	2910	430	TL
16.9-24	R-4	12	W15L	34	1310	429	3250	260	TL
16.9-24	R-4	12/14	W15L	33	1310	429	3250	260	TL



# TARMAC INTERNATIONAL OFF THE ROAD RANGE







# TARMAC INTERNATIONAL

## OFF THE ROAD RANGE



### Compactor

Size	TMA Code	Ply Rating	Standard Rim	Tread Depth (mm)	Overall Diameter (mm)	Section Width (mm)	Max. Load Capacity (kg)	Cold Inflation Pressure (kPa)	TT/TL
14.9-24	EC72	8	W13	21.0	1241	378	1760	180	TT/TL
18.4-26	EC72	12	DW16	23.0	1400	440	2985	230	TT/TL
23.1-26	C-7	8	DW20	17.0	1500	595	4000	140	TT/TL
	C-7	12	DW20	17.0	1500	595	5150(10km/h)	200	TT/TL





# TARMAC INTERNATIONAL

## OFF THE ROAD RANGE



### LOADMASTER-01

Loader / Earthmover / Grader

Size	TMA Code	Ply Rating	Standard Rim	Tread Depth (mm)	Overall Diameter (mm)	Section Width (mm)	Max. Load Capacity (kg)	Cold Inflation Pressure (kPa)	TT/TL
13.00-24	G2/L2	12	10.0	24.5	1300	350	5600	450	TT
	G2/L2	12	12.00/1.3	24.5	1275	395	5600	400	TT
15.5-25	G2/L2	16	12.00/1.3	24.5	1275	395	6750	550	TT
	G-2	12	14.00/1.5	26.0	1350	445	3650	225	TT/TL
17.5-25	L-2	12	14.00/1.5	26.0	1350	445	6150	350	TT/TL
	G-2	16	14.00/1.5	26.0	1350	445	4250	300	TT/TL
	L-2	16	14.00/1.5	26.0	1350	445	7300	475	TT/TL



### G2/L2

Loader / Earthmover / Grader

Size	TMA Code	Ply Rating	Standard Rim	Tread Depth (mm)	Overall Diameter (mm)	Section Width (mm)	Max. Load Capacity (kg)	Cold Inflation Pressure (kPa)	TT/TL
13.00-24TG	G2/L2	12	8.00TG	25.5	1280	335	5600	450	TT/TL
	G2/L2	16	8.00TG	25.5	1280	335	6500	600	TT/TL
14.00-24TG	G2/L2	12	8.00TG	25.5	1350	360	6300	425	TT/TL
	G2/L2	16	8.00TG	25.5	1350	360	7300	550	TT/TL

OFF-THE-ROAD TYRES-BIAS





# TARMAC INTERNATIONAL

## OFF THE ROAD RANGE

### SKS-01



Skid Steer

Size	TMA Code	Ply Rating	Standard Rim	Tread Depth (mm)	Overall Diameter (mm)	Section Width (mm)	Max. Load Capacity (kg)	Cold Inflation Pressure (kPa)	TU/TL
10-16.5	-	8	8.25	15.0	773	264	1880	410	TL
12-16.5	-	10	9.75	18.0	831	307	2540	450	TL

### SKS-02



Skid Steer

Size	TMA Code	Ply Rating	Standard Rim	Tread Depth (mm)	Overall Diameter (mm)	Section Width (mm)	Max. Load Capacity (kg)	Cold Inflation Pressure (kPa)	TU/TL
10-16.5	-	8	8.25	15.0	773	264	1880	410	TL
	-	10	8.25	15.0	773	264	2135	520	TL
12-16.5	-	10	9.75	18.0	831	307	2540	450	TL
	-	12	9.75	18.0	831	307	2865	550	TL



# TARMAC INTERNATIONAL INDUSTRIAL TYRES

## SOLID OTR TYRES

### Loaders and Graders Solid OTR Range



S.NO	SIZE	RIM SIZE	TYRE DIMENSIONS IN MM		LOADING CAPACITY				
			OUTER DIAMETER	Tyre	Steering Wheels	Load Wheels	6 Km/h	10 Km/h	25 Km/h
1	12.00-20	8.00 x 20 & 8.50 x 20 & 10.00 x 20	1080 mm	255 mm	6300	7560	7560	6865	6300
2	12.00-24	8.50 x 24 & 9.00 x 24	1180 mm	288 mm	7500	9500	9500	8500	7500
3	13.00-24	8.50 x 24 & 9.00 x 24	1300 mm	315 mm	6350	7700	7700	7000	6350
4	14.00-20	10.00 x 20	1320 mm	390 mm	14000	16800	16800	15120	14000
5	385/65-24	10.00 x 24	1062 mm	356 mm	80000	9500	10000	9000	8000
6	355/85-24	11.25 x 24 & 12.00 x 25	1216 mm	377 mm	9000	10800	10800	9810	9000
7	14.00-24	10.00 x 24	1320 mm	340 mm	14000	16800	16800	15120	14000
8	14.00-25	10.00 x 25 & 11.25 x 25	1320 mm	390 mm	14000	16800	16800	15120	14000
9	15.50-25	10.00 x 25 & 11.25 x 25	1320 mm	390 mm	14000	16800	16800	15120	14000
10	16.00 x 25	11.25 x 25	1500 mm	430 mm	7000	8800	8800	7800	7000
11	17.50-25	14.00 x 25	1340 mm	440 mm	8000	9800	9800	8800	8000
12	18.00 x 25	13.00 x 25	1540 mm	490 mm	8500	10300	10300	9300	8500
13	20.50-25	17.00 x 25	1450 mm	495 mm	9000	10890	10890	9900	9000
14	23.50-25	19.50 x 25	1650 mm	575 mm	10000	12100	12100	11000	10000
15	26.50-25	22.00 x 25	1730 mm	635 mm	15000	18150	18150	16500	15000
16	29.50-25	25.00 x 25	1860 mm	740 mm	22500	27000	27000	24300	22500
17	16.90-28	15.00 x 28	1410 mm	440 mm	9000	11000	11000	10000	9000
18	35/65-33	28.00 x 33	2030 mm	850 mm	26000	31200	31200	28080	26000